



River Dee Priority Catchment -Paul Chapman

River Dee Priority Catchment



- Cross Compliance and Water Environment Regulations
 - Good Agricultural and Environmental Condition (GAEC)
 - General Binding Rules (GBRs)

- Greening
 - Ecological Focus Area (EFA)

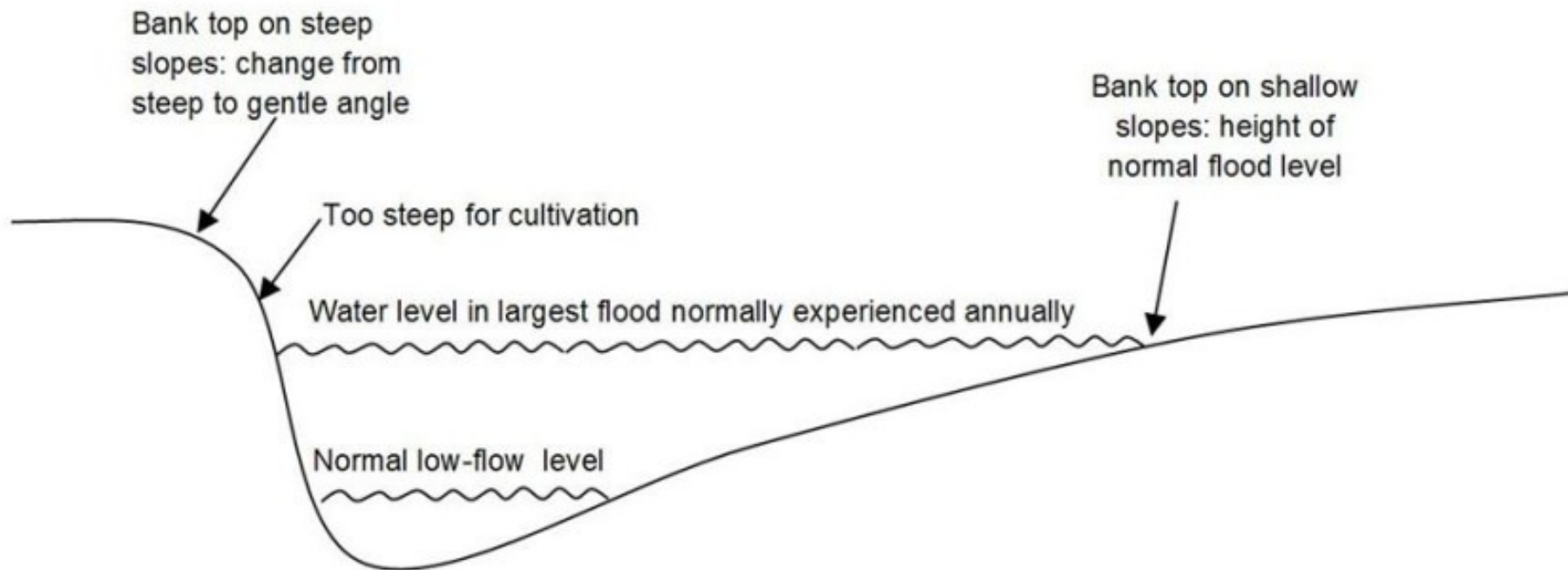
- SRDP
 - Agri-Environment Climate Scheme (AECS)

Distance from Watercourses



| | GBR | GAEC |
|--|------|--|
| Organic Manure application and storage | >10m | >10m |
| Fertiliser Storage | >10m | |
| Fertiliser Application | >2m | 'significant risk of nitrogen entering surface water' |
| Pesticide Storage | >10m | |
| Pesticide Application | >1m | >2m |
| Cultivation | >2m | >2m |
| Erosion/Poaching | >5m | 'banks of watercourses, watering points and feeding areas' |
| Livestock Feeders | >10m | |

'Top of the Bank'



Cross Compliance (GAEC)

Buffer Strips along watercourses (GAEC 1 & GBR 20)



Cross Compliance (GAEC)



Minimum land management reflecting site specific conditions to limit erosion (GAEC 5 & GBR 19)



Greening



FARM
ADVISORY
SERVICE



EFA Fallow
15 January-15 July
Any width

Greening



Greening



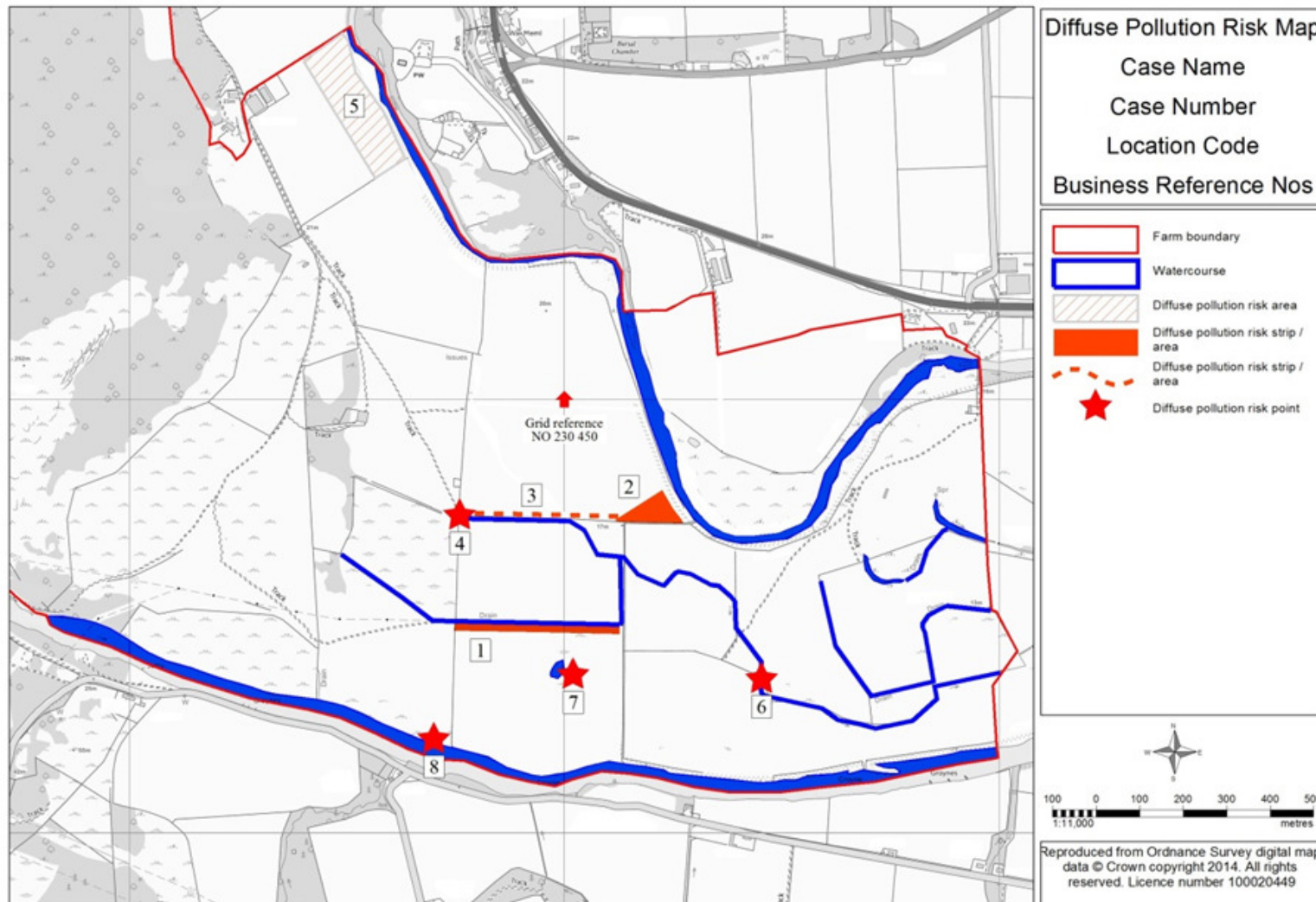
AECS

Agri-Environment Climate Scheme

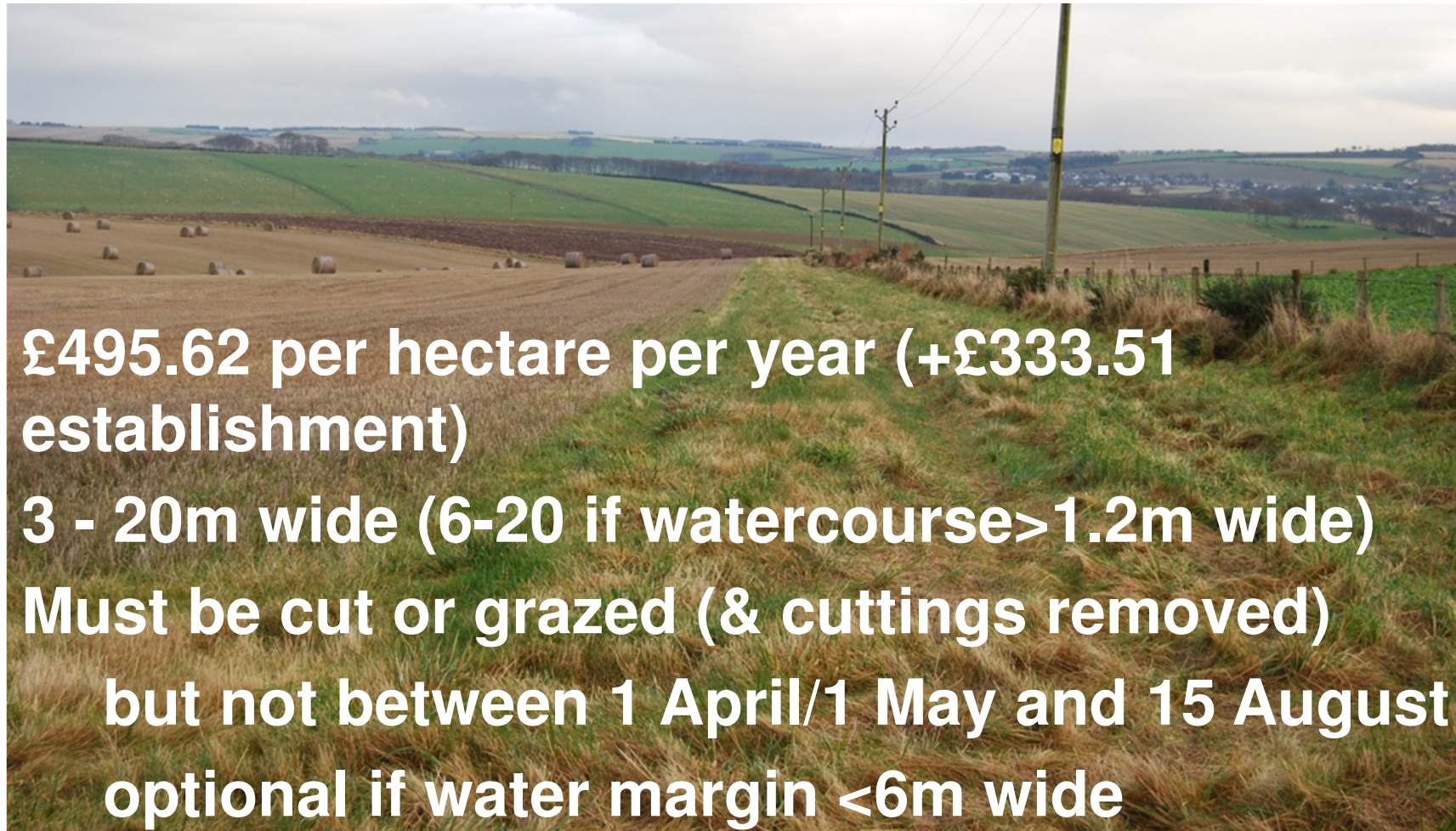


- Open for new applications until 13th April
- Competitive (points system) & Targeted
- 5-year commitment starting in January 2018
- Changes to scoring in 2017:
 - Extra points for applications <£20,000
 - No restrictions on amount of fencing for applications <£20,000

Farm Environment Assessment



Grass Strips/Water Margins on Arable Land



£495.62 per hectare per year (+£333.51 establishment)

3 - 20m wide (6-20 if watercourse > 1.2m wide)

Must be cut or grazed (& cuttings removed)

but not between 1 April/1 May and 15 August

optional if water margin < 6m wide

Water Margins in grassland

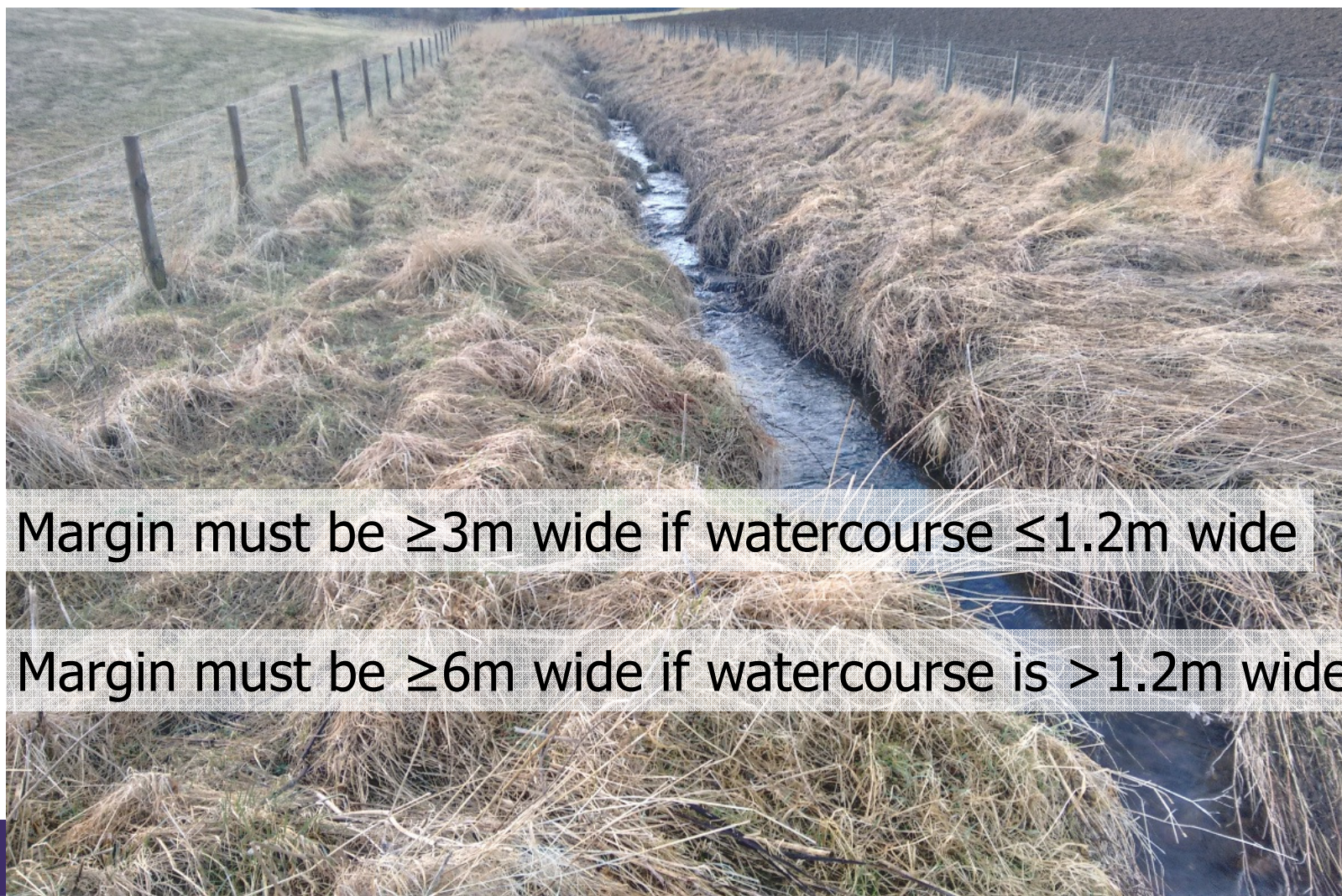


FARM
ADVISORY
SERVICE



The European Agricultural Fund
for Rural Development
Europe investing in rural areas

Water Margins in grassland



Margin must be $\geq 3\text{m}$ wide if watercourse $\leq 1.2\text{m}$ wide

Margin must be $\geq 6\text{m}$ wide if watercourse is $> 1.2\text{m}$ wide



Water Margins in grassland



Water Margins in grassland



No payment on
2m GAEC strip

£123.42/ha per
year



Water Margins



Water Margins in grassland



£5.50 per metre for stock fencing

Capital grants for alternative watering



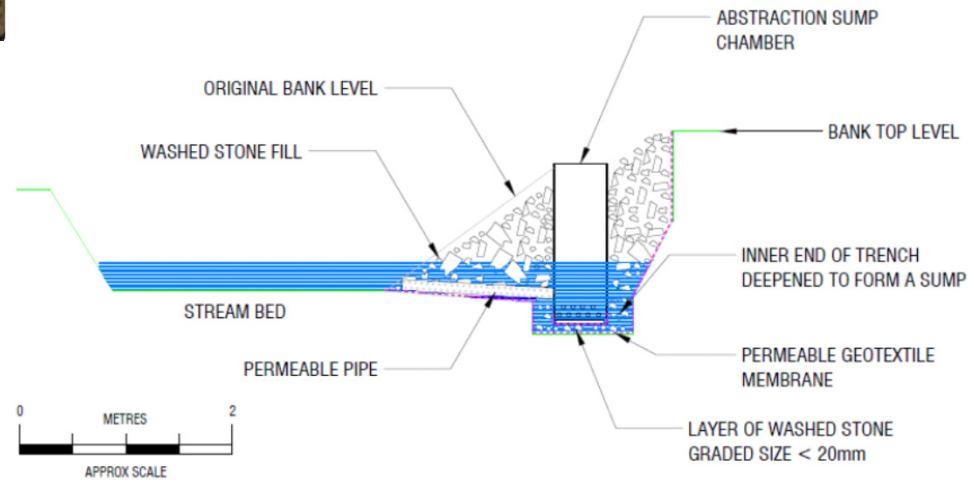
Alternative Watering



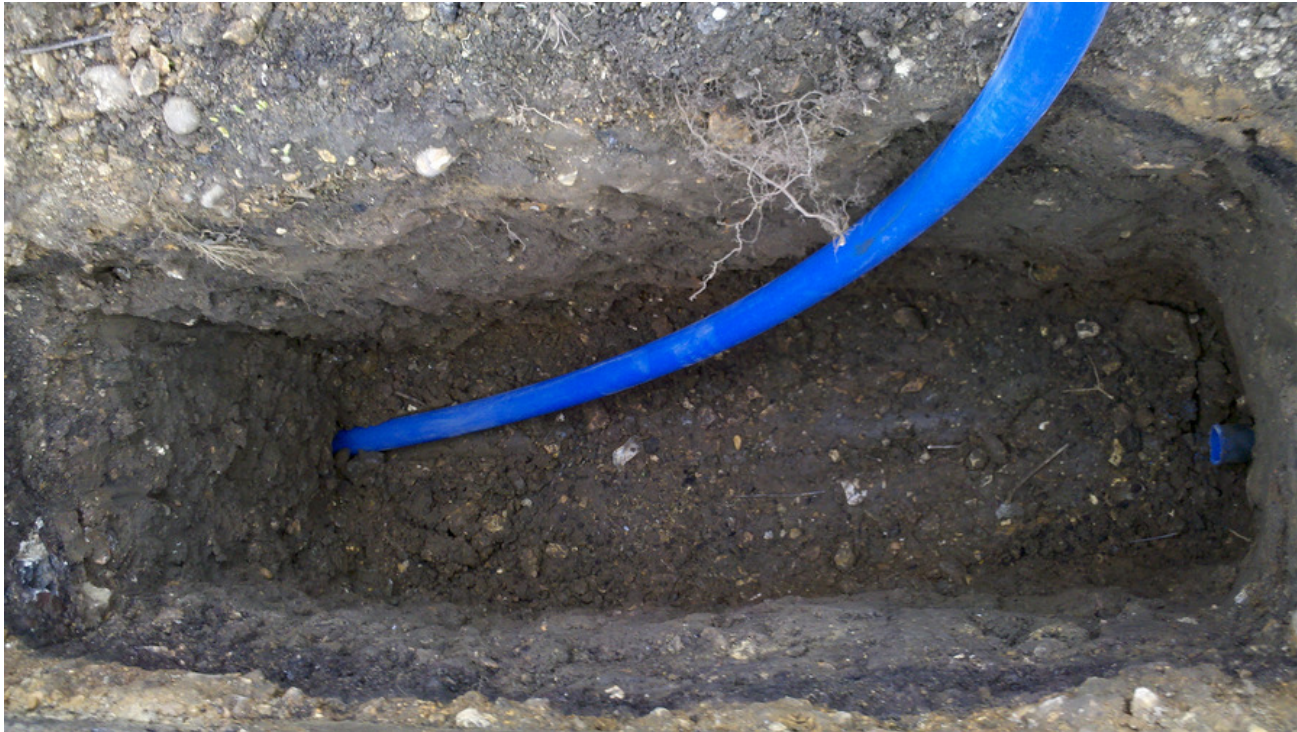
Water meter for mains supply:
£150

- Creation of watercourse abstraction: £476

ABSTRACTION



Alternative Watering

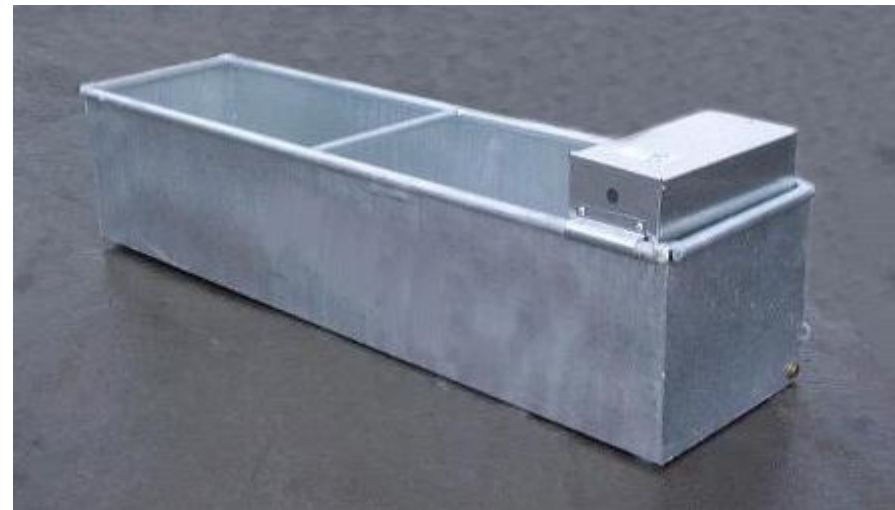


Water pipework:
£7.77 per metre

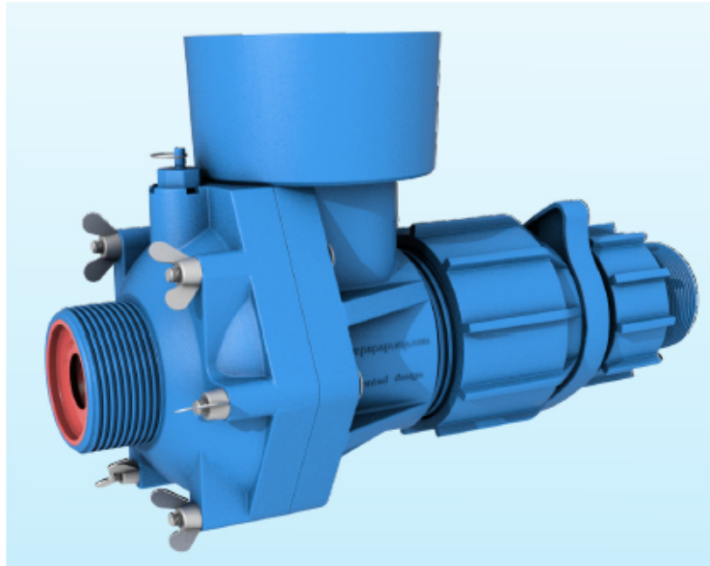
Alternative Watering



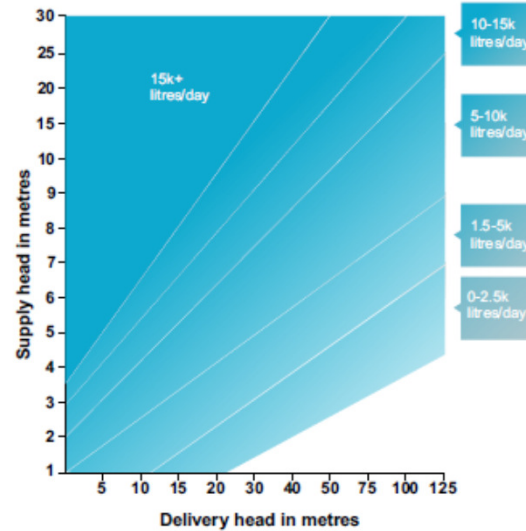
Trough:
Actual Cost
(3 quotes)



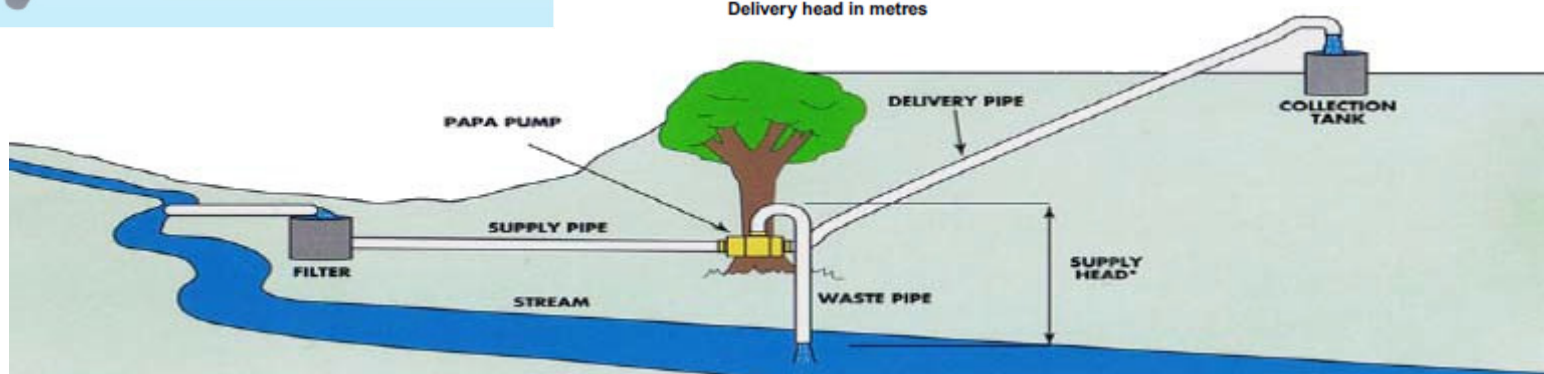
Alternative Watering



Amount pumped per day
(Approx. based on 50 litres/minute input)



Water-powered pump system:
£1,350



Alternative Watering



Solar powered
pump system:
£2,000– £3,100

Alternative Watering



Stock-powered pump: £450

AECS - Steadings



Managing Steading Drainage and Rural Sustainable Drainage Systems

(Maximum £10,000)

- Underground drainage— £35.46 per linear metre
- Concreting uncovered steading or court surfaces – £32.27 per square metre

Rural Sustainable Drainage

- Swales (£21.75 per square metre)
- Sediment traps, ponds, wetlands

AECS - Steadings



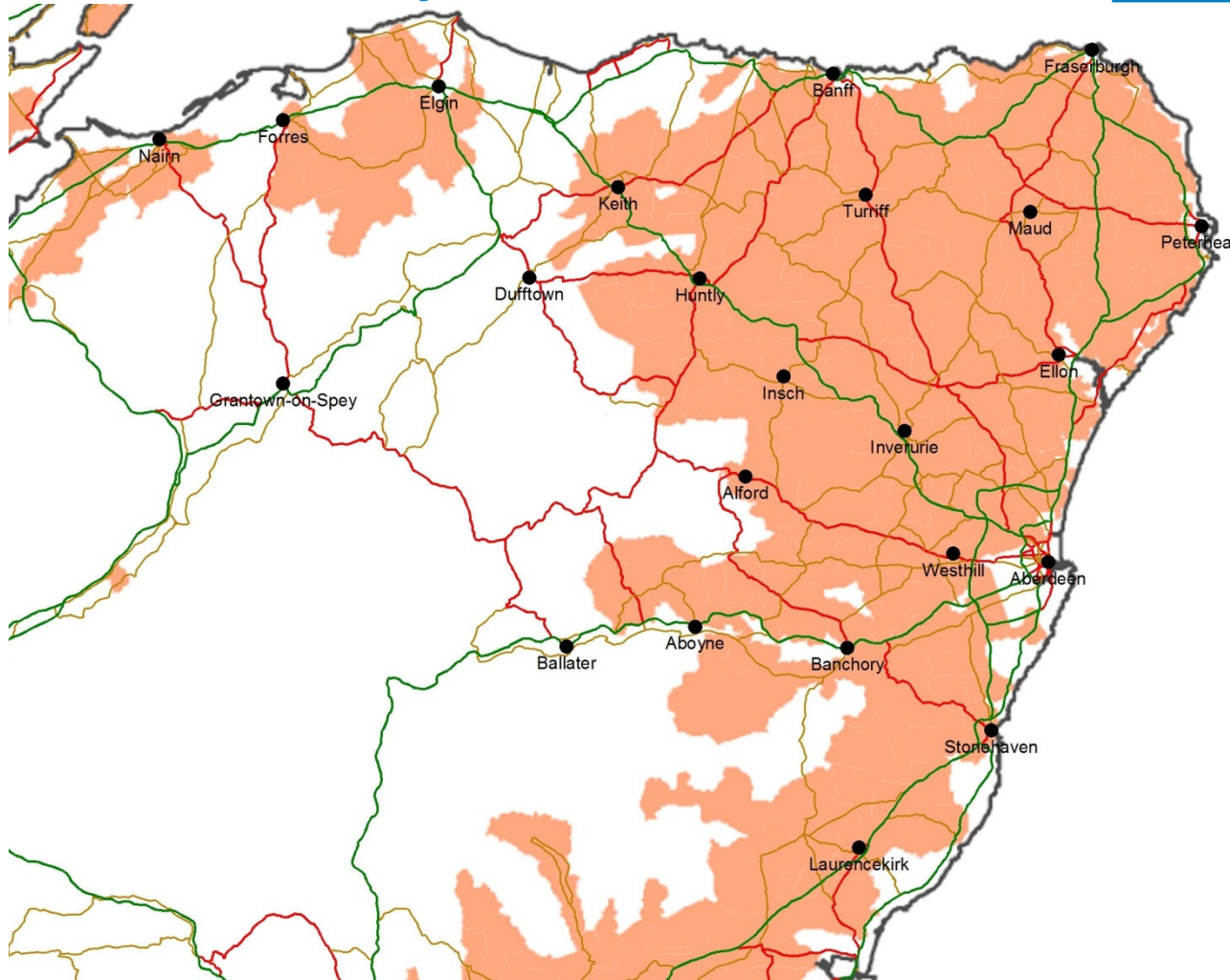
Pesticide Handling Facilities

- concrete bunded area – £102 per square metre
- offset biobed (not including concrete bunded area) – £75 per square metre
- biofilter – £3,100 per installed unit
- closed transfer pesticide filling system – £600
- drip trays / portable bunds:
 - plastic drip tray – minimum 100 litre capacity – £50
 - shallow spill sump – minimum 150 litre capacity – £170
 - shallow spill sump – minimum 350 litre capacity – £233
 - deep spill sump minimum 2,000 litre capacity – £590
 - spill kit (to absorb at least 45 litres) – £75

AECS National Priority Diffuse Pollution



FARM
ADVISORY
SERVICE



The European Agricultural Fund
for Rural Development
Europe investing in rural areas



Scottish Government
Riaghaltas na h-Alba
gov.scot