

attractive forestry grants

no impact on BPS if planting on eligible land

maintain stock numbers

improve farm access

save money

improved animal welfare & productivity

WORKING WITH YOU

Creating new woodland offers you flexibility. Grant applications, planting and maintaining your woodland, can all be done at times that fit around your core business needs. Allowing you to continue to focus your efforts and resources on your livestock especially at peak lambing times.

FURTHER INFORMATION AND USEFUL LINKS

Sheep and Trees is a partnership between the following organisations:

Forestry Commission Scotland

www.forestry.gov.uk/scotlandgrants

National Farmers Union Scotland

www.nfus.org.uk

Scottish Government Agriculture and Rural Economy Division

<https://www.ruralpayments.org/publicsite/futures>

National Sheep Association Scotland

www.nationalsheep.org.uk/nsa-scotland

SHEEP & TREES



USING TREES TO
IMPROVE FARM VIABILITY

Well designed and managed woodlands integrated into your farm or estate can support your agricultural activities, generate income and save you money.

Sheep and Trees is a partnership initiative aimed at helping land managers identify the many opportunities woodland creation can bring to support and develop their existing farm enterprises.

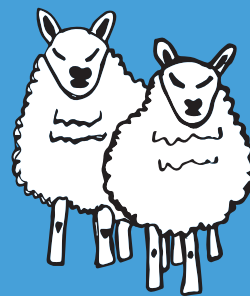
POSITIVE CHANGE

Changes introduced under the current **Forestry Grant Scheme** mean that if you plant on eligible land it will not impact your **Basic Area Payments**. You will also be able to graze your new woodland once the trees are mature enough to avoid browsing damage without any penalty – this could be within 10 years depending on species and growth rate.

BOOST YOUR BUSINESS

New woodland planted with clear objectives, designed well and carefully located within hill and upland sheep farms can bring many benefits to your business - **some** are listed below:

- provide important shelter and extend overwintering periods
- help provide more manageable grazing units
- improve farm business productivity – particularly on poorer quality land
- retain same flock size while introducing trees as a new crop
- significantly improve on farm access through use of well-planned forest access roads
- help reduce farming costs and maintain income leading to improved net income
- grow into a valuable capital asset, source of timber and future income stream.



NEW FUNDING OPPORTUNITY FOR HILL AND UPLAND SHEEP FARMS

The **Sheep and Trees** partners have helped Forestry Commission Scotland create a special new funding package for hill and upland farms.

The **Sheep and Trees Forestry Grant Package** brings together two different elements of the Forestry Grant Scheme. Uniquely, it enables you to apply for **both a woodland creation grant AND an infrastructure grant** for the same area at the same time.

You will, therefore, be able to build access routes to help you get started and then manage your new farm woodland as it grows. It creates an excellent opportunity for you to diversify your business and bring parts of your farmland into production which you may have not considered previously for planting due to lack of access.

ELIGIBILITY

To be eligible you must be continuing to farm a significant part of your farm and planting 10 - 50 hectares of productive conifer.

HOW TO APPLY

For information on how to apply for the Sheep and Trees Forestry Grant package visit:

www.forestry.gov.uk/scotlandgrants

Applications are welcome all year round.